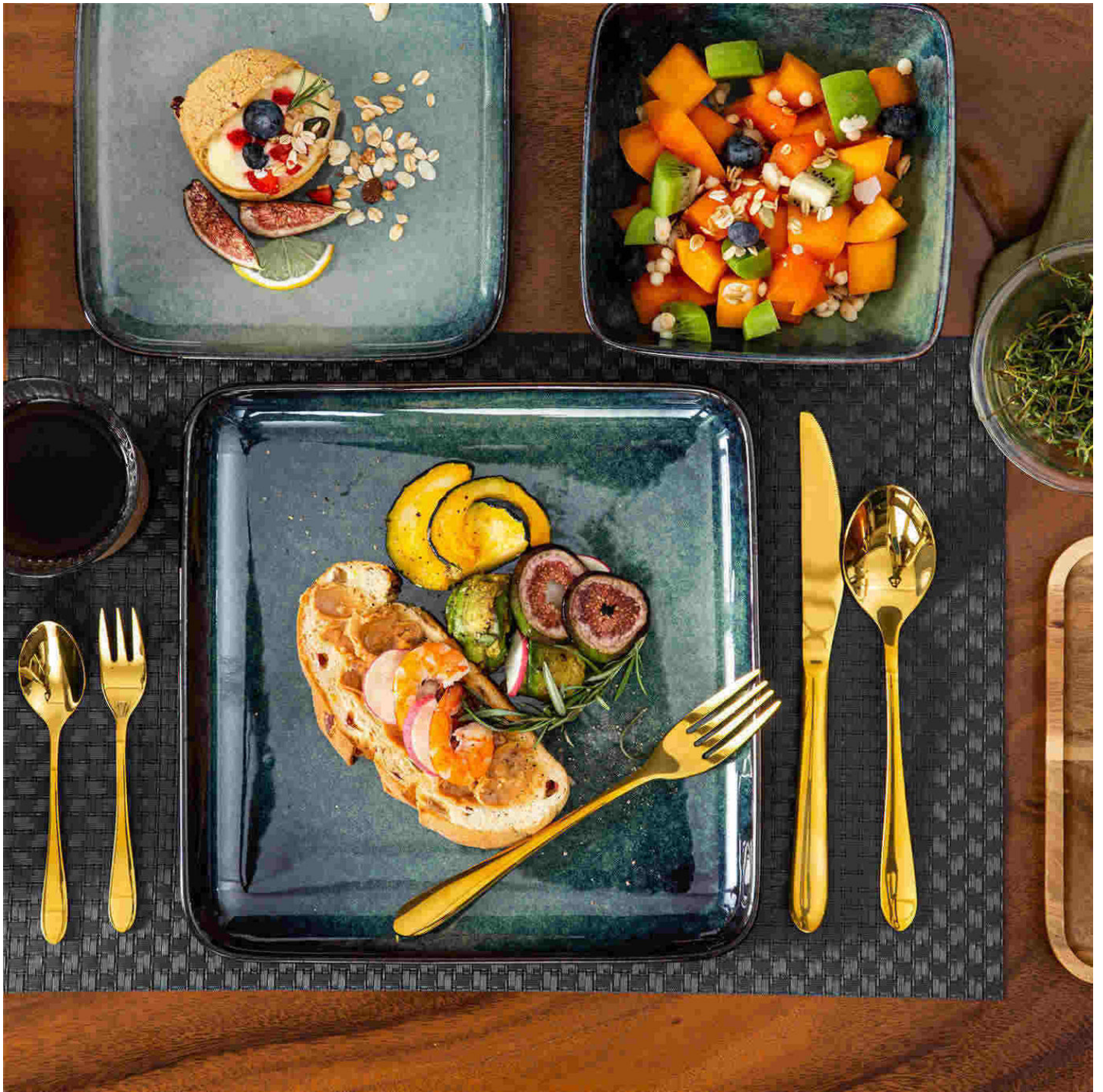


When it comes to creating a charming and inviting table setting, farmhouse dinnerware sets are a popular choice for many households. These sets exude a rustic yet elegant vibe that can elevate any dining experience. Whether you're hosting a casual brunch or a formal dinner party, having the right dinnerware can make all the difference. Here are 6 must-have farmhouse dinnerware sets that will help you achieve the perfect table setting.



Classic White Stoneware Set

A classic white stoneware set is a versatile option that can complement any table decor. The simplicity of white dinnerware allows your food to take center stage while adding a touch of elegance to your table setting. Look for pieces with subtle embossed details or scalloped edges for a farmhouse-inspired twist.

Rustic Earthenware Collection

For a more rustic look, opt for an earthenware dinnerware set. These pieces often feature earthy tones and a handcrafted feel that adds warmth to your table. Mix and match different patterns and textures within the same color palette to create a cohesive yet eclectic look.

Vintage-Inspired Farmhouse China

If you're a fan of vintage charm, consider investing in a farmhouse china set. These sets typically feature delicate floral patterns, scalloped edges, and intricate details that harken back to a bygone era. Pair your farmhouse china with antique silverware and crystal glassware for a truly elegant table setting.

Modern Farmhouse Melamine Set

For a more practical option that doesn't sacrifice style, a modern farmhouse melamine set is a great choice. Melamine dinnerware is durable, lightweight, and shatterproof, making it ideal for outdoor dining or family gatherings. Choose pieces with a distressed finish or weathered look for that farmhouse aesthetic.

Hand-Painted Ceramic Dinner Set

Add a touch of artisanal flair to your table with a hand-painted ceramic dinner set. These sets are often crafted by skilled artisans and feature unique designs and patterns that can't be replicated by mass-produced dinnerware. Showcase these pieces as statement pieces on your table for a one-of-a-kind look.

In conclusion, selecting the right [farmhouse dinnerware](#) set can set the tone for your dining experience and elevate the overall ambiance of your table setting. Whether you prefer classic white stoneware, rustic earthenware, vintage-inspired china, modern melamine, or hand-painted ceramics, there is a farmhouse dinnerware set to suit every style and occasion. Experiment with mixing and matching different sets to create a personalized and inviting table setting that will impress your guests.

References

- [farmhouse dinnerware](#)