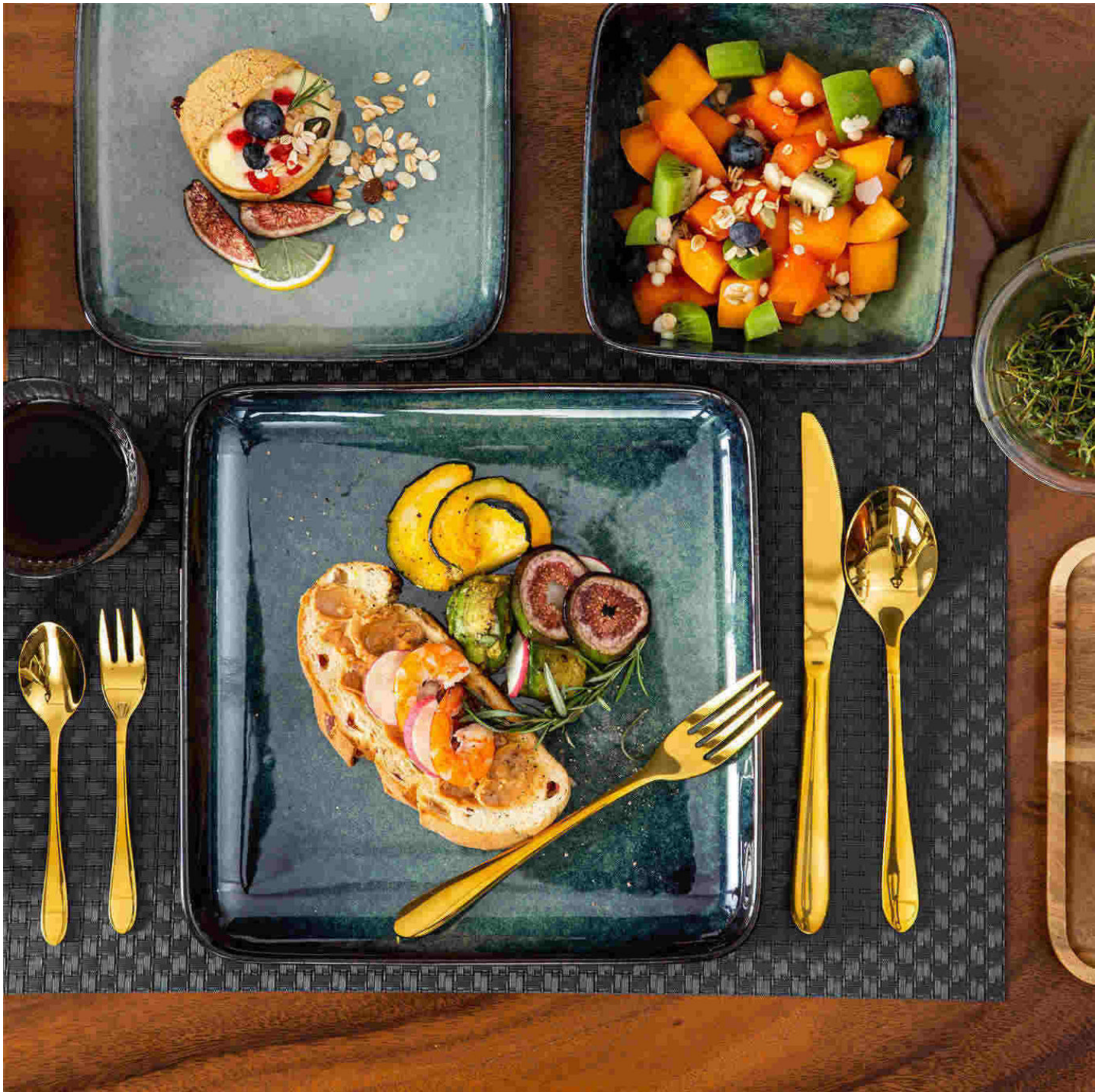


When it comes to setting the table for a special occasion or everyday dining, choosing the perfect farmhouse dinnerware set can make all the difference. From rustic charm to elegant simplicity, farmhouse dinnerware sets offer a versatile and timeless appeal. Here's a guide on how to select the ideal farmhouse dinnerware set for any event.



Consider the Style

One of the first things to consider when choosing a farmhouse dinnerware set is the style that best suits your aesthetic preferences. Whether you prefer a classic white set for a clean and timeless look or a more colorful and patterned set for a vibrant touch, there are plenty of options to choose from. Think about the overall theme of your dining space and the ambiance you want to create for the occasion.

Material Matters

Another important factor to consider is the material of the dinnerware set. Farmhouse dinnerware sets are often made from durable materials like stoneware, porcelain, or ceramic. Each material has its own unique characteristics, so it's essential to choose one that not only complements your style but also suits your practical needs. For example, stoneware is known for its durability and rustic appeal, while porcelain offers a more refined and elegant look.

Setting Size and Configuration

When selecting a farmhouse dinnerware set, it's crucial to consider the size and configuration of the set. Determine how many place settings you need based on the number of guests you typically entertain. Additionally, think about the pieces included in the set, such as dinner plates, salad plates, bowls, and mugs. Make sure the set has all the essential pieces you require for a complete dining experience.

Budget-Friendly Options

While [farmhouse dinnerware sets](#) can vary in price, there are plenty of budget-friendly options available that don't compromise on quality or style. Look for sets that offer a good value for the number of pieces included and the material used. You can also mix and match different sets to create a unique and eclectic table setting that reflects your personal taste.

In conclusion, choosing the perfect farmhouse dinnerware set for any occasion involves considering the style, material, setting size, configuration, and budget. By taking these factors into account, you can select a set that not only enhances your dining experience but also adds a touch of charm and elegance to your table setting.

References

- [farmhouse dinnerware sets](#)