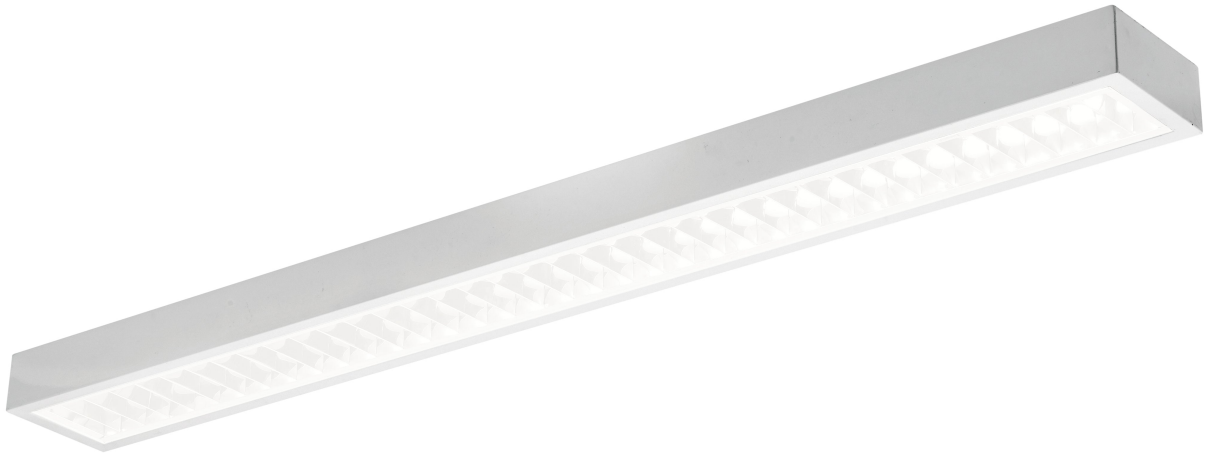


# Illuminate Your Warehouse: Discover the Game-Changing Benefits of LED Linear Ceiling Lights!

In today's fast-paced industrial environments, efficient lighting solutions have become more crucial than ever, especially in warehouses where visibility and safety are paramount. Enter [LED linear ceiling lights](#)—a modern alternative that is transforming how warehouses illuminate their vast spaces. These lights not only provide superior brightness but also enhance energy efficiency, making them a smart choice for warehouse operations. As businesses strive to optimize their workflows, understanding the benefits and features of LED linear ceiling lights becomes essential. This article will delve into the transformative impact these lights can have on warehouse operations, highlighting why they are becoming the go-to solution for lighting in industrial settings.



## Understanding LED Linear Ceiling Lights

LED linear ceiling lights are a type of lighting fixture characterized by their long, narrow design, which allows them to provide consistent illumination across wide areas. Unlike traditional fluorescent or incandescent lights, LED lights utilize semiconductor technology to produce light, enabling them to be more efficient and versatile. One of the significant differences between LED and traditional lighting options is the absence of warm-up time; LEDs reach their full brightness almost instantly. Additionally, they come in various configurations, including recessed, surface-mounted, and suspended designs, making them adaptable to different warehouse layouts. This flexibility ensures that warehouses can achieve optimal lighting conditions tailored to their specific needs, enhancing both functionality and safety.

## Benefits of LED Linear Ceiling Lights for Warehouses

When it comes to warehouse lighting, LED linear ceiling lights offer a multitude of advantages that can lead to significant operational improvements. One of the most notable benefits is energy efficiency. LEDs consume significantly less electricity than traditional lighting options, which translates into lower energy bills. This reduction in energy consumption not only helps the bottom line but also contributes to a smaller carbon footprint, making warehouses more environmentally friendly. Furthermore, LED lights have a lifespan that can exceed 50,000 hours, meaning they last much longer than traditional bulbs, which often burn out after just a few thousand hours. This longevity reduces the frequency of replacements, leading to lower maintenance costs and less downtime. Improved visibility is another key advantage; the bright, consistent light provided by LEDs enhances safety and accuracy in warehouse operations, helping employees work more efficiently and safely.

### Energy Efficiency

One of the standout features of LED linear ceiling lights is their energy efficiency. Unlike traditional lighting systems that waste a significant amount of energy as heat, LEDs convert a higher percentage of energy into usable light. This efficiency not only lowers energy bills but also reduces the overall demand for electricity. Many warehouse managers I've spoken to have noted how switching to LED lighting has significantly decreased their monthly utility costs. One friend, who manages a large distribution center, reported a 40% reduction in lighting expenses after making the switch. Such savings can be reinvested into other areas of the business, further enhancing operational efficiency.

### Longevity and Durability

Another compelling benefit of LED linear ceiling lights is their remarkable lifespan. Traditional lighting options often require frequent bulb replacements, particularly in warehouses where lighting is used extensively. In contrast, LED lights can last up to 50,000 hours or more, significantly outpacing their traditional counterparts. This durability is especially advantageous in challenging warehouse environments where dust, temperature fluctuations, and vibrations can lead to premature failures of standard fixtures. A friend who oversees a warehouse noted that since installing LED lighting, they have drastically reduced the time and resources spent on maintenance and replacements, allowing their team to focus on core operations instead.

## **Key Features to Look for in LED Linear Ceiling Lights**

When selecting LED linear ceiling lights for warehouse applications, several key features should be considered to ensure optimal performance and safety. One of the most important aspects is lumen output, which indicates the brightness of the light. Higher lumen output is essential in large warehouse spaces to ensure all areas are adequately lit. Additionally, color temperature plays a vital role in creating a comfortable working environment. A cooler color temperature (around 5000K) can mimic daylight, improving visibility and reducing eye strain for employees. Another crucial feature is the beam angle, which determines how light is distributed in the space. A wider beam angle can help cover larger areas with fewer fixtures, enhancing overall illumination and safety.

## **Specifications of LED Linear Ceiling Lights**

Understanding the specifications of LED linear ceiling lights is crucial for finding the right fit for warehouse needs. Typical specifications include wattage, which affects both energy consumption and brightness; a higher wattage usually indicates a brighter light output. Dimensions are also essential, as the size of the fixture should match the scale of the warehouse space. Installation options vary as well, with choices ranging from surface-mounted to suspended fixtures, allowing for flexibility based on ceiling height and layout. Many warehouses also benefit from lights that offer dimming capabilities, allowing for adjustable brightness levels depending on the time of day or specific tasks at hand. This adaptability can enhance both energy efficiency and worker comfort.

## **Transformative Benefits of LED Linear Ceiling Lights**

In summary, LED linear ceiling lights represent a transformative solution for warehouse lighting, offering numerous benefits such as energy efficiency, longevity, and enhanced visibility. With their adaptability and advanced features, these lights not only improve operational efficiency but also contribute to a safer working environment. As warehouse owners consider ways to upgrade their lighting systems, investing in LED technology can lead to significant long-term savings and operational improvements. Embracing LED linear ceiling lights is a step toward a more efficient and sustainable future in warehouse management.